

BALI



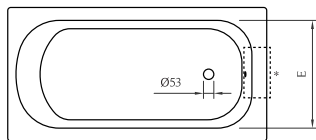
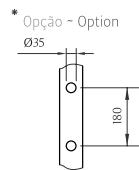
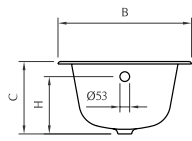
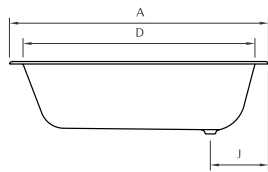
1200 X 700 | 1400 X 700 | 1500 X 700 | 1600 X 700 | 1700 X 700

Opções:
Fundo anti-deslizante | Furos para torneiras | Pegas cromadas ou douradas | Pés reguláveis

Options:
Antislip | Tap holes | Chromed or golden handgrips | Adjustable feet

DIMENSÕES - DIMENSIONS (mm)

1500	1200	700	390	1020	560	-	-	320	-	320	-	-	-	-	-	-	-
1500	1400	700	390	1220	560	-	-	320	-	320	-	-	-	-	-	-	-
1500	1500	700	420	1320	560	-	-	350	-	320	-	-	-	-	-	-	-
1600	1600	700	420	1420	560	-	-	350	-	320	-	-	-	-	-	-	-
1700	1700	700	420	1520	560	-	-	350	-	320	-	-	-	-	-	-	-
	A	B	C	D	E	F	G	H	I	J	L	M	N	O	P	Q	R



Medidas Aproximadas | Válvula de segurança disponível com 63mm
Approximate measurements | Overflow hole available with 63mm

1200	
KG	LT
PESO/WEIGHT	VOL.
84	100

1400	
KG	LT
PESO/WEIGHT	VOL.
88	130

1500	
KG	LT
PESO/WEIGHT	VOL.
102	145

1600	
KG	LT
PESO/WEIGHT	VOL.
112	160

1700	
KG	LT
PESO/WEIGHT	VOL.
117	175

